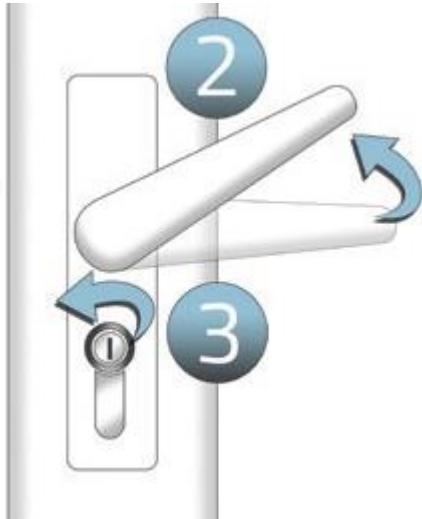




IMPRESSIONS

WINDOWS

**CARE GUIDE FOR
YOUR NEW UPVC
DOOR**

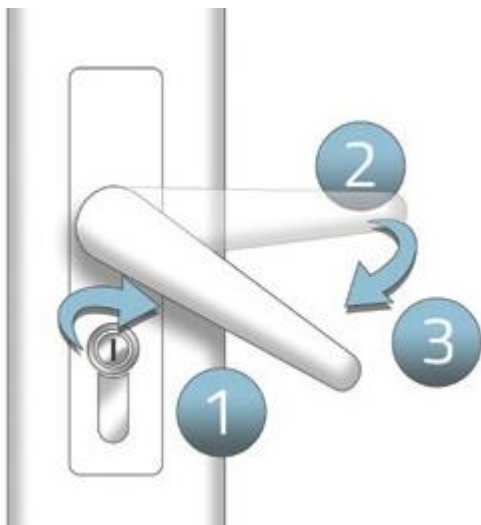


To Lock:

1. Close the door – latchlock engages.
2. Fully lift the handle or pad to engage the top and bottom deadbolts/ hookbolts/rollers
3. Insert key and turn to engage centre deadbolt and fully lock

If the key will not turn lift handle or pad to maximum position and then turn key

To Unlock:



1. Insert key and turn to unlock
2. Press handle or pad down to Disengage top and bottom deadbolts/hookbolts/rollers
3. Push handle down to fully disengage

DOUBLE DOORS:

Dependant on locking mechanism there are two slave door locking options:

A handle operated shootbolt lock operating in the same way as the master door

or

Hand operated fingerbolts are fitted to the top and bottom of the door

Lubrication – As Required

➤ **Locking Mechanism**

- With the door open, lubricate the deadbolts/ hookbolts/rollers and latchlock with light machine oil

➤ **Hinges**

- Clean and lightly oil hinge pins. If hinges are external (Open out door) lubricate every six months

➤ **Handles**

- Clean and lightly oil external moving parts

➤ **Lock Cylinder**

- Cylinders can be lubricated with graphite based products only, DO NOT use WD40 or similar oils as they may cause degradation. **We recommend using Lution Graphite Lubricant**

Cleaning

- Clean with a soap and water solution periodically (we recommend every 6 months) to remove any grime and atmospheric deposits.
- If required clean with UPVC solvent cleaner – this is available to buy from our showroom